



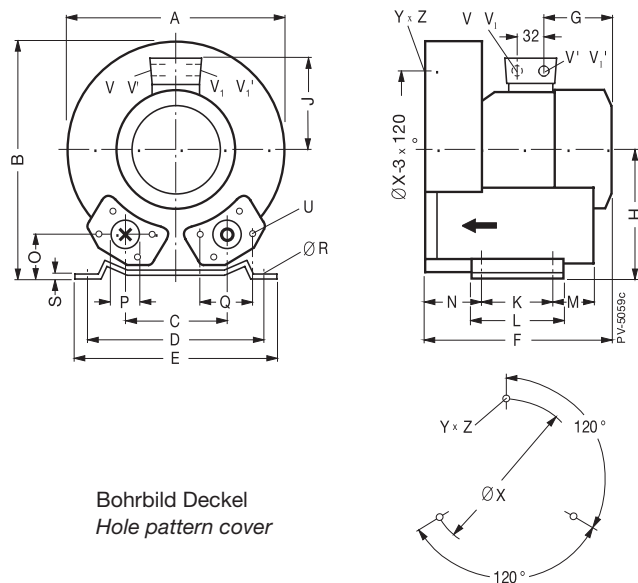
Dimensionen · Dimensions

G-Serie • G-Series

Maße für Seitenkanalverdichter 2BH1 10. bis 2BH1 49.

Dimensions for side channel blowers 2BH1 10. to 2BH1 49. [mm]

2BH1 10. / 2BH1 30. / 2BH1 33. / 2BH1 40. / 2BH1 43. / 2BH1 49.



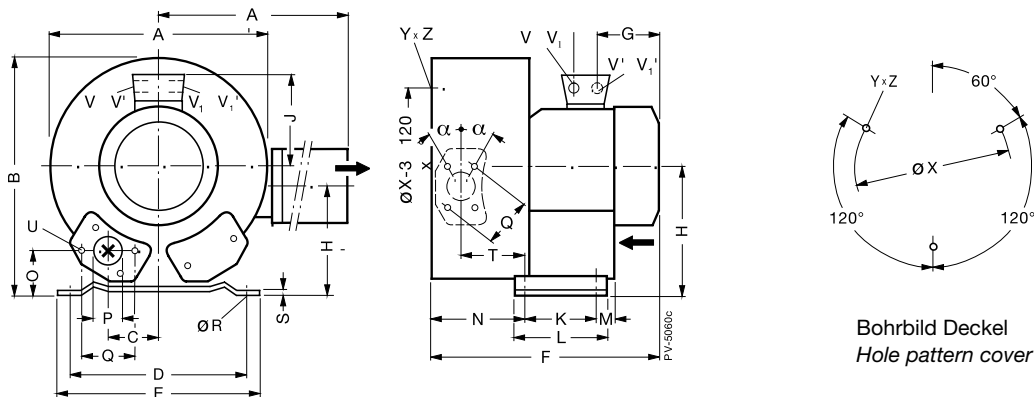
Typ	Phasen																	
Type	Phases																	
		A	B	C	D	E	F	G	H	J	K	L	M	N	O	P	Q	Ø R
2BH1 30. - 7A.1.	1 ~	246	247	90	205	230	256	129	128	111	83	108	75	71	39	G 1¼ (15 tief • deep)	64	10
2BH1 10. - 7A.0.	1 ~	246	247	90	205	230	256	129	128	111	83	108	75	71	39	G 1¼ (15 tief • deep)	64	10
2BH1 30. - 7A.0.	3 ~	246	247	90	205	230	219	92	128	101	83	108	75	71	39	G 1¼ (15 tief • deep)	64	10
- 7A.1.		246	247	90	205	230	256	129	128	111	83	108	75	71	39	G 1¼ (15 tief • deep)	64	10
2BH1 33. -7AH06	3 ~	246	247	90	205	230	242	102	128	101	83	108	75	84	39	G 1¼ (15 tief • deep)	64	10
2BH1 33. -7AH16	3 ~	246	247	90	205	230	269	129	128	111	83	108	75	84	39	G 1¼ (15 tief • deep)	64	10
2BH1 33. -7AH26	3 ~	246	247	90	205	230	269	129	128	111	83	108	75	84	39	G 1¼ (15 tief • deep)	64	10
2BH1 33. -7AV15	1 ~	246	247	90	205	230	269	123	128	111	83	108	75	84	39	G 1¼ (15 tief • deep)	64	10
2BH1 40. - 7A.1.	1 ~	285	302	115	225	255	292	156	154	120	95	130	70	75	46	G 1½ (15 tief • deep)	72	12
- 7A.2.		285	302	115	225	255	292	156	154	120	95	130	70	75	46	G 1½ (15 tief • deep)	72	12
2BH1 40. - 7A.0.	3 ~	285	302	115	225	255	269	129	154	120	95	130	70	75	46	G 1½ (15 tief • deep)	72	12
- 7A.1.		285	302	115	225	255	292	153	154	120	95	130	70	75	46	G 1½ (15 tief • deep)	72	12
- 7A.2.		285	302	115	225	255	292	153	154	120	95	130	70	75	46	G 1½ (15 tief • deep)	72	12
2BH1 43. -7AA11	1 ~	285	302	115	225	255	311	156	154	120	95	130	70	75	46	G 1½ (15 tief • deep)	72	12
2BH1 43. -7AH06	3 ~	285	302	115	225	255	288	129	154	120	95	130	70	75	46	G 1½ (15 tief • deep)	72	12
2BH1 43. -7AH16	3 ~	285	302	115	225	255	311	156	154	120	95	130	70	75	46	G 1½ (15 tief • deep)	72	12
2BH1 43. -7AH26	3 ~	285	302	115	225	255	311	156	154	120	95	130	70	75	46	G 1½ (15 tief • deep)	72	12
2BH1 43.-7AV25	1 ~	285	302	115	225	255	311	147	154	120	95	130	70	75	46	G 1½ (15 tief • deep)	72	12
2BH1 49. - 7AA1.	1 ~	285	302	115	225	255	292	156	154	120	95	130	70	75	46	G 1½ (15 tief • deep)	72	12
- 7AB1.		285	302	115	225	255	292	156	154	120	95	130	70	75	46	G 1½ (15 tief • deep)	72	12
- 7AH1.	3 ~	285	302	115	225	255	153	156	154	120	95	130	70	75	46	G 1½ (15 tief • deep)	72	12

Type	Phasen								X-Bohrungen	
Type	Phases								X-Holes	Ø X
		S	U	V (1 ~)	V' (1 ~)	V1 (3 ~)	V'1 (3 ~)	Y x Z		
2BH1 30. - 7A.1.	1 ~	2,5	M 6 x 17	M 16 x 1,5	M 25 x 1,5	–	–	M 6 x 15	0°/120°/240°	Ø 140
2BH1 10. - 7A.0.	1 ~	2,5	M 6 x 17	–	–	–	–	M 6 x 15	0°/120°/240°	Ø 140
2BH1 30. - 7A.0.	3 ~	2,5	M 6 x 17	–	–	M 25 x 1,5	M 16 x 1,5	M 6 x 15	0°/120°/240°	Ø 140
- 7A.1.		2,5	M 6 x 17	–	–	M 25 x 1,5	M 16 x 1,5	M 6 x 15	0°/120°/240°	Ø 140
2BH1 33. - 7AH06	3 ~	2,5	M 6 x 17	–	–	M 25 x 1,5	M 16 x 1,5	M 6 x 15	0°/120°/240°	Ø 140
2BH1 33. - 7AH16	3 ~	2,5	M 6 x 17	–	–	M 25 x 1,5	M 16 x 1,5	M 6 x 15	0°/120°/240°	Ø 140
2BH1 33. - 7AH26	3 ~	2,5	M 6 x 17	–	–	M 25 x 1,5	M 16 x 1,5	M 6 x 15	0°/120°/240°	Ø 140
2BH1 33. - 7AV15	3 ~	2,5	M 6 x 17	–	–	M 25 x 1,5	M 16 x 1,5	M 6 x 15	0°/120°/240°	Ø 140
2BH1 40. - 7A.1.	1 ~	3	M 6 x 19	M 16 x 1,5	M 25 x 1,5	–	–	M 6 x 15	0°/120°/240°	Ø 174
- 7A.2.		3	M 6 x 19	M 16 x 1,5	M 25 x 1,5	M 25 x 1,5	M 16 x 1,5	M 6 x 15	0°/120°/240°	Ø 174
2BH1 40. - 7A.0.	3 ~	3	M 6 x 19	–	–	M 25 x 1,5	M 16 x 1,5	M 6 x 15	0°/120°/240°	Ø 174
- 7A.1.		3	M 6 x 19	–	–	M 25 x 1,5	M 16 x 1,5	M 6 x 15	0°/120°/240°	Ø 174
- 7A.2.		3	M 6 x 19	–	–	M 25 x 1,5	M 16 x 1,5	M 6 x 15	0°/120°/240°	Ø 174
2BH1 43. - 7AA11	1 ~	3	M 6 x 19	–	–	M 25 x 1,5	M 16 x 1,5	M 6 x 15	0°/120°/240°	Ø 174
2BH1 43. - 7AH06	3 ~	3	M 6 x 19	–	–	M 25 x 1,5	M 16 x 1,5	M 6 x 15	0°/120°/240°	Ø 174
2BH1 43. - 7AH16	3 ~	3	M 6 x 19	–	–	M 25 x 1,5	M 16 x 1,5	M 6 x 15	0°/120°/240°	Ø 174
2BH1 43. - 7AH26	3 ~	3	M 6 x 19	–	–	M 25 x 1,5	M 16 x 1,5	M 6 x 15	0°/120°/240°	Ø 174
2BH1 43. - 7AV25	1 ~	3	M 6 x 19	–	–	M 25 x 1,5	M 16 x 1,5	M 6 x 15	0°/120°/240°	Ø 174
2BH1 49. - 7AA1.	1 ~	3	M 6 x 19	M 16 x 1,5	M 25 x 1,5	–	–	M 6 x 15	0°/120°/240°	Ø 174
- 7AB1.		3	M 6 x 19	M 16 x 1,5	M 25 x 1,5	–	–	M 6 x 15	0°/120°/240°	Ø 174
- 7AH1.	3 ~	3	M 6 x 19	–	–	M 25 x 1,5	M 16 x 1,5	M 6 x 15	0°/120°/240°	Ø 174

Maße für Seitenkanalverdichter 2BH1 31., 2BH1 41.

Dimensions for side channel blowers 2BH1 31., 2BH1 41. [mm]

2BH1 31. / 2BH1 41.



Type	Phasen																		
Type	Phases																		
		A	A'	B	C	D	E	F	G	H	H'	J	K	L	M	N	O	P	Q
2BH1 31. - 7H.2.	3 ~	284	316	270	45	205	230	316	129	128	106	111	83	108	75	130	39	G 1¼ (15 tief • deep)	64
2BH1 41. - 7H.3	3 ~	321	321	315	58	225	255	401	185	154	154	128	95	130	70	151	46	G 1½ (15 tief • deep)	72
- 7H.4.	3 ~	321	321	315	58	225	255	401	185	154	154	128	95	130	70	151	46	G 1½ (15 tief • deep)	72

Type	Phasen													X-Bohrungen
Type	Phases													X-Holes
		Ø R	S	T	U	V (1 ~)	V' (1 ~)	V1 (3 ~)	V'1 (3 ~)	a	Ø X	Y x Z		
2BH1 31. - 7H.2.	3 ~	10	2,5	88	M 6 x 17	–	–	M 25 x 1,5	M 16 x 1,5	27°	140	M 6 x 15	51°/171°/291°	
2BH1 41. - 7H.3.	3 ~	12	3	106	M 6 x 19	–	M 25 x 1,5	M 16 x 1,5	M 16 x 1,5	28°	174	M 6 x 15	51°/171°/291°	
- 7H.4.	3 ~	12	3	106	–	–	–	–	M 16 x 1,5	28°	174	M 6 x 15	51°/171°/291°	



Dimensionen · Dimensions

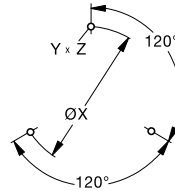
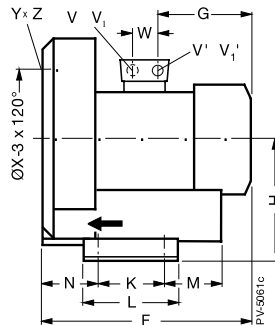
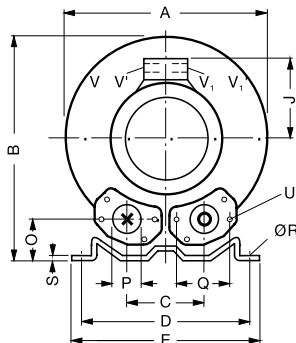
G-Serie • G-Series

Maße für Seitenkanalverdichter 2BH1 50. bis 2BH1 69.

Dimensions for side channel blowers 2BH1 50. to 2BH1 69. [mm]

2BH1 50. / 2BH1 59.

2BH1 60. / 2BH1 69.



Bohrbild Deckel
Hole pattern cover

Typ	Phasen																	
Type	Phases																	
		A	B	C	D	E	F	G	H	J	K	L	M	N	O	P	Q	Ø R
2BH1 50. - 7A.1.	1~	334	337	120	260	295	313	156	175	120	115	155	96	87	48	55	83	14
- 7A.2.	1~	334	337	120	260	295	345	188	175	128	115	155	96	87	48	55	83	14
2BH1 50. - 7A.0.	3 ~	334	337	120	260	295	314	153	175	120	115	155	96	87	48	55	83	14
- 7A.1.	3 ~	334	337	120	260	295	314	153	175	120	115	155	96	87	48	55	83	14
- 7A.2.	3 ~	334	337	120	260	295	346	185	175	128	115	155	96	87	48	55	83	14
- 7A.3.	3 ~	334	337	120	260	295	346	185	175	128	115	155	96	87	48	55	83	14
2BH1 530-7AA21	1~	334	337	120	260	295	371	188	174	128	115	155	96	87	48	55	83	14
2BH1 530-7AH06	3 ~	334	337	120	260	295	339	152	174	128	115	155	96	87	48	55	83	14
2BH1 530-7AH16	3 ~	334	337	120	260	295	339	152	174	128	115	155	96	87	48	55	83	14
2BH1 530-7AH26	3 ~	334	337	120	260	295	371	184	174	128	115	155	96	87	48	55	83	14
2BH1 530-7AH36	3 ~	334	337	120	260	295	371	184	174	128	115	155	96	87	48	55	83	14
2BH1 530-7AV35	1~	334	337	120	260	295	371	178	174	128	115	155	96	87	48	55	83	14
2BH1 59. - 7AA2.	1~	334	337	120	260	295	345	188	174,5	128	115	155	96	87	48	55	83	15
- 7AB2.	1~	334	337	120	260	295	345	188	174,5	128	115	155	96	87	48	55	83	15
- 7AH2.	3 ~	334	337	120	260	295	345	185	174,5	128	115	155	96	87	48	55	83	15
2BH1 60. - 7A.0.	3 ~	382	384	125	290	325	377	185	198	128	140	180	84	109	54	55	83	15
- 7A.1.	3 ~	382	384	125	290	325	377	185	198	128	140	180	84	109	54	55	83	15
- 7A.2.	3 ~	382	384	125	290	325	411	190	198	135	140	180	84	109	54	55	83	15
- 7A.3.	3 ~	382	384	125	290	325	432	211	198	148	140	180	84	109	54	55	83	15
2BH1 630-7AH06	3 ~	381	420	125	290	325	385	184	197	148	140	180	84	109	54	55	83	15
2BH1 630-7AH16	3 ~	381	420	125	290	325	385	184	197	148	140	180	84	109	54	55	83	15
2BH1 630-7AH26	3 ~	381	420	125	290	325	419	189	197	148	140	180	84	109	54	55	83	15
2BH1 630-7AH37	3 ~	381	420	125	290	325	440	210	197	148	140	180	84	109	54	55	83	15
2BH1 69. - 7A.2.	3 ~	381	420	125	290	325	377	85	197	128	140	180	84	109	54	55	83	15

Type	Phasen										X-Bohrungen	
Type	Phases										X-Holes	W
		S	U	V (1 ~)	V' (1 ~)	V1 (3 ~)	V'1 (3 ~)	Ø X	Y x Z			
2BH1 50. - 7A.1.	1~	4	M 8 x 17	M 16 x 1,5	M 25 x 1,5	–	–	200	M 8 x 20	0°/120°/240°	32	
- 7A.2.	1~	4	M 8 x 17	M 16 x 1,5	M 25 x 1,5	–	–	200	M 8 x 20	0°/120°/240°	32	
2BH1 50. - 7A.0.	3 ~	4	M 8 x 17	–	–	M 25 x 1,5	M 16 x 1,5	200	M 8 x 20	0°/120°/240°	32	
- 7A.1.	3 ~	4	M 8 x 17	–	–	M 25 x 1,5	M 16 x 1,5	200	M 8 x 20	0°/120°/240°	32	
- 7A.2.	3 ~	4	M 8 x 17	–	–	M 25 x 1,5	M 16 x 1,5	200	M 8 x 20	0°/120°/240°	32	
- 7A.3.	3 ~	4	M 8 x 17	–	–	M 25 x 1,5	M 16 x 1,5	200	M 8 x 20	0°/120°/240°	32	
2BH1 530-7AA21	1~	4	M 8 x 17	M 16 x 1,5	M 25 x 1,5	–	–	200	M 8 x 20	0°/120°/240°	32	
2BH1 530-7AH06	3 ~	4	M 8 x 17	M 16 x 1,5	M 25 x 1,5	–	–	200	M 8 x 20	0°/120°/240°	32	
2BH1 530-7AH16	3 ~	4	M 8 x 17	M 16 x 1,5	M 25 x 1,5	–	–	200	M 8 x 20	0°/120°/240°	32	
2BH1 530-7AH26	3 ~	4	M 8 x 17	M 16 x 1,5	M 25 x 1,5	–	–	200	M 8 x 20	0°/120°/240°	32	
2BH1 530-7AH36	3 ~	4	M 8 x 17	M 16 x 1,5	M 25 x 1,5	–	–	200	M 8 x 20	0°/120°/240°	32	
2BH1 530-7AV35	1~	4	M 8 x 17	M 16 x 1,5	M 25 x 1,5	–	–	200	M 8 x 20	0°/120°/240°	32	
2BH1 59. - 7AA2.	1~	4	M 8 x 17	M 16 x 1,5	M 25 x 1,5	–	–	200	M 8 x 20	0°/120°/240°	32	
- 7AB2.	1~	4	M 8 x 17	M 16 x 1,5	M 25 x 1,5	–	–	200	M 8 x 20	0°/120°/240°	32	
- 7AH2.	3 ~	4	M 8 x 17	–	–	M 25 x 1,5	M 16 x 1,5	200	M 8 x 20	0°/120°/240°	32	
2BH1 60. - 7A.0.	3 ~	4,5	M 8 x 17	–	–	M 25 x 1,5	M 16 x 1,5	240	M 10 x 20	0°/120°/240°	32	
- 7A.1.	3 ~	4,5	M 8 x 17	–	–	–	–	240	M 10 x 20	0°/120°/240°	32	
- 7A.2.	3 ~	4,5	M 8 x 17	M 32 x 1,5	M 32 x 1,5	M 32 x 1,5	M 32 x 1,5	240	M 10 x 20	0°/120°/240°	42	
- 7A.3.	3 ~	4,5	M 8 x 17	M 32 x 1,5	M 32 x 1,5	M 32 x 1,5	M 32 x 1,5	240	M 10 x 20	0°/120°/240°	42	
2BH1 630-7AH06	3 ~	4,5	M 8 x 17	M 32 x 1,5	M 32 x 1,5	M 32 x 1,5	M 32 x 1,5	240	M 10 x 20	0°/120°/240°	42	
2BH1 630-7AH16	3 ~	4,5	M 8 x 17	M 32 x 1,5	M 32 x 1,5	M 32 x 1,5	M 32 x 1,5	240	M 10 x 20	0°/120°/240°	42	
2BH1 630-7AH26	3 ~	4,5	M 8 x 17	M 32 x 1,5	M 32 x 1,5	M 32 x 1,5	M 32 x 1,5	240	M 10 x 20	0°/120°/240°	42	
2BH1 630-7AH37	3 ~	4,5	M 8 x 17	M 32 x 1,5	M 32 x 1,5	M 32 x 1,5	M 32 x 1,5	240	M 10 x 20	0°/120°/240°	42	
2BH1 69. - 7A.2.	3 ~	4,5	M 8 x 17	–	–	M 25 x 1,5	M 16 x 1,5	240	M 10 x 20	0°/120°/240°	32	



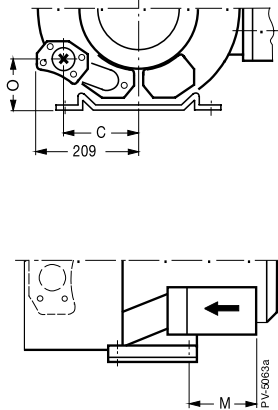
Dimensionen · Dimensions

G-Serie • G-Series

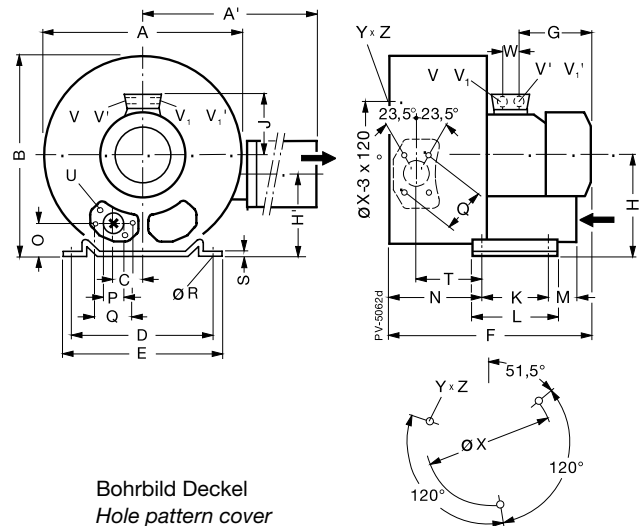
Maße für Seitenkanalverdichter 2BH1 51., 2BH1 61.

Dimensions for side channel blowers 2BH1 51., 2BH1 61. [mm]

2BH1 61. -...4.
-...5.



2BH1 51.
2BH1 61. -...1.
-...2.
-...3.



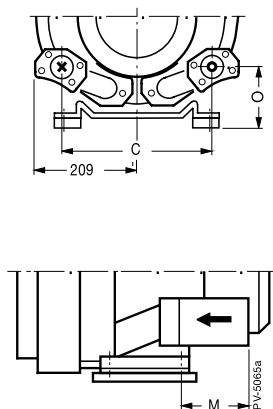
Bohrbild Deckel
Hole pattern cover

Typ																		
Type																		
	A	A'	B	C	D	E	F	G	H	H'	J	K	L	M	N	O	Ø P	Q
2BH1 51. - 7H.4.	372	411	371	60	260	295	465	190	175	144	135	115	155	98	171	48	55	83
- 7H.5.	372	411	371	60	260	295	499	224	175	144	135	115	155	98	171	48	55	83
2BH1 61. - 7H.1.	426	424	420	63	290	325	473	185	198	164	128	140	180	84	205	54	55	83
- 7H.2.	426	424	420	63	290	325	507	190	198	164	135	140	180	84	205	54	55	83
- 7H.3.	426	424	420	63	290	325	528	211	198	164	148	140	180	84	205	54	55	83
- 7H.4.	426	424	420	154	290	325	570	225	198	164	167	140	180	225	205	94	55	83
- 7H.5.	426	424	420	154	290	325	570	225	198	164	167	140	180	225	205	94	55	83

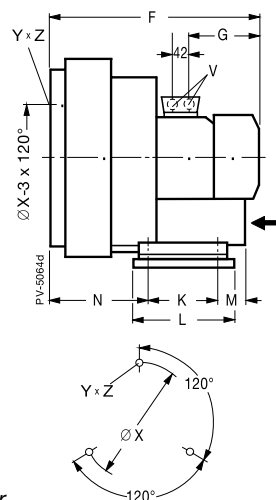
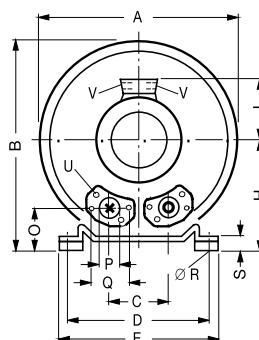
Typ													
Type											X-Bohrungen		
	Ø R	S	T	U	V	V'	V1	V'1	Ø X	Y x Z	X-Holes	W	
2BH1 51. - 7H.4.	14	4	116	M 8 x 17	4 x M 32 x 1,5				200	M 8 x 20	51,5°/171,5°/291,5°	42	
- 7H.5.	14	4	116	M 8 x 17	4 x M 32 x 1,5				200	M 8 x 20	51,5°/171,5°/291,5°	42	
2BH1 61. - 7H.1.	15	4,5	129	M 8 x 17	M 25 x 1,5	M 16 x 1,5	–	–	240	M 10 x 20	51,5°/171,5°/291,5°	32	
- 7H.2.	15	4,5	129	M 8 x 17	M 25 x 1,5	M 16 x 1,5	–	–	240	M 10 x 20	51,5°/171,5°/291,5°	32	
- 7H.3.	15	4,5	129	M 8 x 17	4 x M 32 x 1,5				240	M 10 x 20	51,5°/171,5°/291,5°	32	
- 7H.4.	15	4,5	129	M 8 x 17	4 x M 32 x 1,5				240	M 10 x 20	51,5°/171,5°/291,5°	32	
- 7H.5.	15	4,5	129	M 8 x 17	4 x M 32 x 1,5				240	M 10 x 20	51,5°/171,5°/291,5°	32	

Maße für Seitenkanalverdichter 2BH1 64. • Dimensions for side channel blowers 2BH1 64. [mm]

2BH1 64. -...4.
-...5.



2BH1 64.-...3.



Bohrbild Deckel
Hole pattern cover

Typ														
Type														
	A	B	C	C'	D	E	F	G	H	J	K	L	M	N
2BH1 64. - 7G.3.	424	430	125	—	290	325	528	211	218	148	140	188	84	205
- 7G.4.	424	430	—	309	290	325	569	224	218	167	140	188	225	205
- 7G.5.	424	430	—	309	290	325	569	224	218	167	140	188	225	205

Typ											X-Bohrungen
Type											X-Holes
	O	Ø P	Q	Ø R	S	U	V	Ø X	Y x Z		
2BH1 64. - 7G.3.	74	55	83	15	24,5	M 8 x 17	4 x M 32 x 1,5	240	M 10 x 20	0°/120°/240°	
- 7G.4.	114	55	83	15	24,5	M 8 x 17	4 x M 32 x 1,5	240	M 10 x 20	0°/120°/240°	
- 7G.5.	114	55	83	15	24,5	M 8 x 17	4 x M 32 x 1,5	240	M 10 x 20	0°/120°/240°	



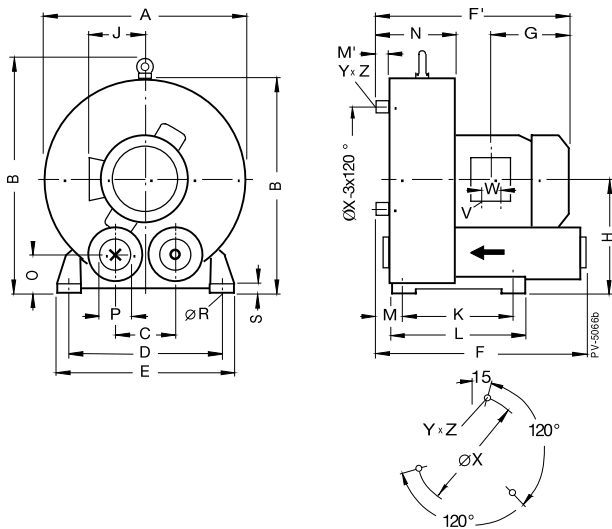
Dimensionen · Dimensions

G-Serie • G-Series

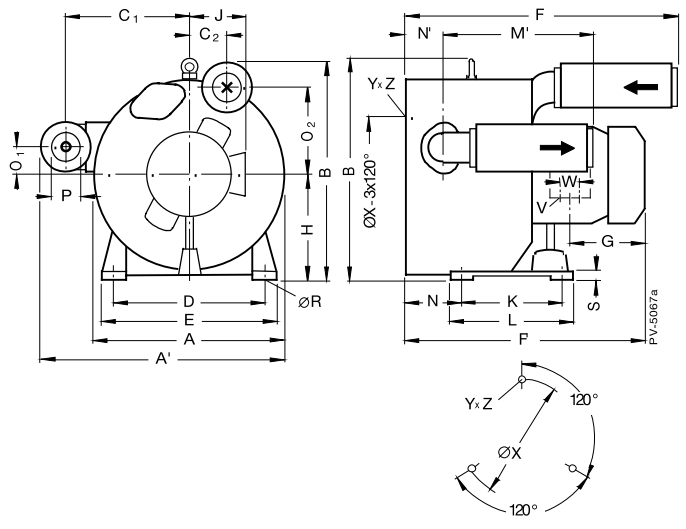
Maße für Seitenkanalverdichter 2BH1 80., 2BH1 81.

Dimensions for side channel blowers 2BH1 80., 2BH1 81. [mm]

2BH1 80.



2BH1 81.



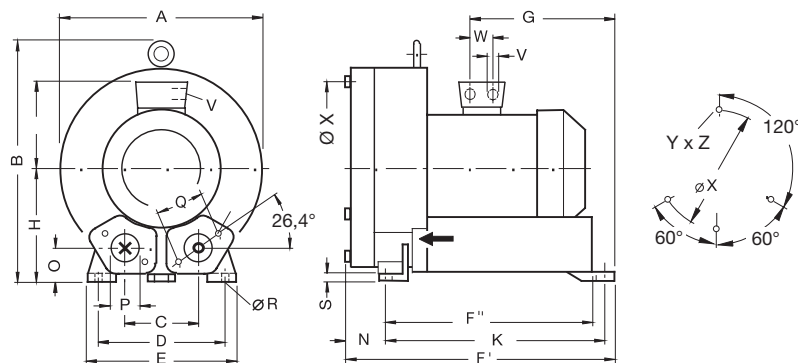
Typ																			
Type																			
	A	A'	B	B'	C	C1	C2	D	E	F	F'	G	H	J	K	L	M	M'	N
2BH1 80.-7A.0.	498	–	514	567	145	–	–	365	420	495	470	211	265	148	280	316	35	10	170
- 7A.1.	498	–	514	567	145	–	–	365	420	495	493	224	265	167	280	316	35	10	170
- 7A.2.	498	–	514	567	145	–	–	365	420	495	493	224	265	167	280	316	35	10	170
2BH1 81.-7H.1.	501	636	516	567	–	318	68,5	365	420	601	598	224	265	167	280	316	–	402	140,5
- 7H.2.	501	636	516	567	–	318	68,5	365	420	601	598	224	265	167	280	316	–	402	140,5
- 7H.3.	501	636	516	567	–	318	73	365	420	726	687	291	265	167	280	316	–	402	140,5
- 7H.4.	501	636	516	567	–	318	73	365	420	726	687	291	265	167	280	316	–	402	140,5
2BH1830 -7AH07	498	–	514	567	145	–	–	365	420	495	–	210	265	167	280	316	–	10	170
2BH1830 -7AH17	498	–	514	567	145	–	–	365	420	495	–	210	265	167	280	316	–	10	170
2BH1830 -7AH27	498	–	514	567	145	–	–	365	420	495	–	210	265	167	280	316	–	10	170

Typ												
Type												X-Bohrungen
	N'	O	O1	O2	Ø P	Ø R	S	V	W	Ø X	Y x Z	X-Holes
2BH1 80. -7A.0.	–	81	–	–	G 2½	15	22	2 x Pg 21	42	408	M 12 x 20	15°/135°/255°
- 7A.1.	–	81	–	–	G 2½	15	22	2 x Pg 21	42	408	M 12 x 20	15°/135°/255°
- 7A.2.	–	81	–	–	G 2½	15	22	2 x Pg 21	42	408	M 12 x 20	15°/135°/255°
2BH1 81. -7H.1.	104	–	66	186	G 2½	15	22	4 x M 52 x 1,5	42	408	M 12 x 20	0°/120°/240°
- 7H.2.	104	–	66	186	G 2½	15	22	4 x M 52 x 1,5	42	408	M 12 x 20	0°/120°/240°
- 7H.3.	104	–	66	234	G 2½	15	22	4 x M 40 x 1,5	54	408	M 12 x 20	0°/120°/240°
- 7H.4.	104	–	66	234	G 2½	15	22	4 x M 40 x 1,5	54	408	M 12 x 20	0°/120°/240°
2BH1830 -7AH07	–	81	–	–	G 2½	15	22	2 x Pg 21	42	292	M 12 x 20	0°/120°/240°
2BH1830 -7AH17	–	81	–	–	G 2½	15	22	2 x Pg 21	42	292	M 12 x 20	0°/120°/240°
2BH1830 -7AH27	–	81	–	–	G 2½	15	22	2 x Pg 21	42	292	M 12 x 20	0°/120°/240°

Maße für Seitenkanalverdichter 2BH1 90., 2BH1 93.

Dimensions for side channel blowers 2BH1 90., 2BH1 93. [mm]

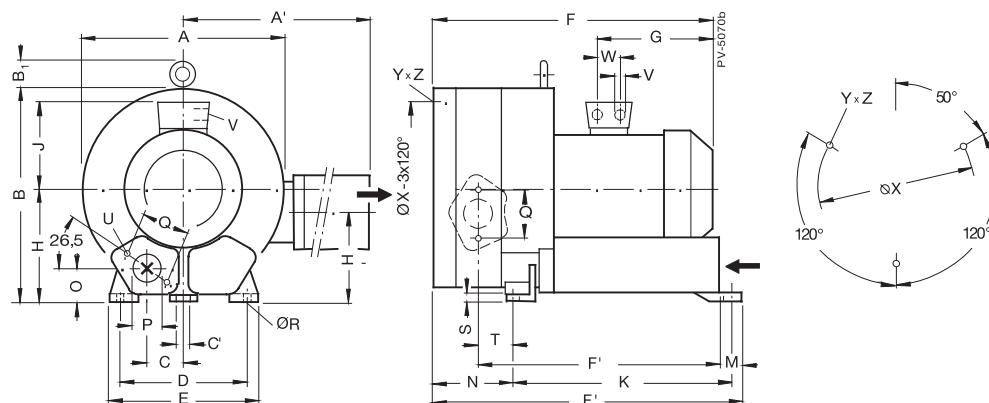
2BH1 90./2BH1 93.



Typ														
Type														
	A	B		C		D	E		F'	F''	G	H		N
2BH1 90. und • and														
2BH1 93. - 7A.0.	555	629		207		360	415		726	576	407	300		108
- 7A.1.	555	629		207		360	415		726	576	386	300		108
- 7A.3.	555	629		207		360	415		726	576	386	300		108

Typ											X-Bohrungen
Type											X-Holes
	O	ØP	Q	ØR	S		V	W	ØX	Y x Z	
2BH1 90. und • and											
2BH1 93. - 7A.0.	91	100	150	15	25		4 x M32 x 1,5	42	490	M 12 x 30	0°/120°/180°/240°
- 7A.1.	91	100	150	15	25		4 x M40 x 1,5	54	490	M 12 x 30	0°/120°/180°/240°
- 7A.3.	91	100	150	15	25		4 x M40 x 1,5	54	490	M 12 x 30	0°/120°/180°/240°

Maße für Seitenkanalverdichter 2BH1 91. • Dimensions side channel blowers for 2BH1 91. [mm]



Typ																	
Type																	
	A	A'	B	B1	C	C'	D	E	F	F'	F''	G	H	H'	J	K	M
2BH1 91. - 7H.1.	560	796	580	52	104	15	360	415	765	860	661	291	300	245	197	596	52
- 7H.2.	560	796	580	52	104	15	360	415	765	860	661	291	300	245	197	596	52
- 7H.3.	560	796	580	52	104	15	360	415	765	860	661	291	300	245	197	596	52

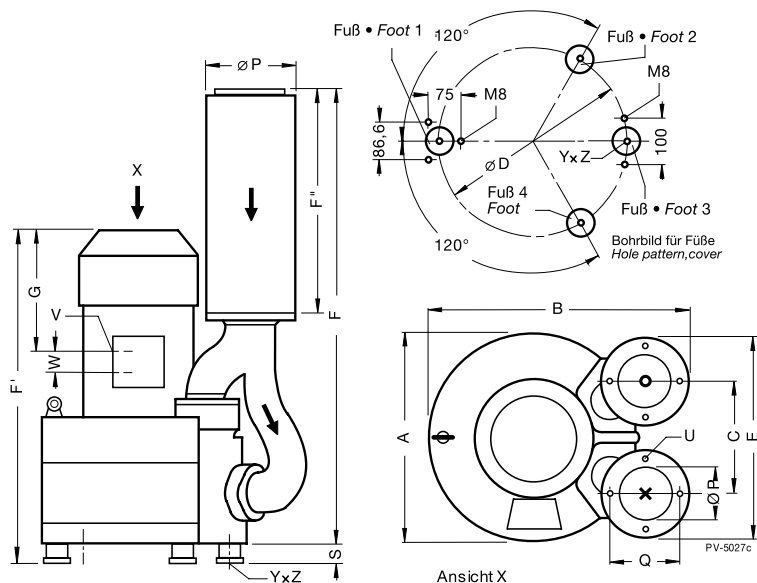
Typ													X-Bohrungen
Type													X-Holes
	N	O	ØP	Q	ØR	S	T	U	V	W	ØX	Y x Z	
2BH1 91. - 7H.1.	242	91	100	150	15	25	95	M 12 x 30	4 x M40 x 1,5	54	490	M 12 x 30	51,4°/171,4°/291,4°
- 7H.2.	242	91	100	150	15	25	95	M 12 x 30	4 x M40 x 1,5	54	490	M 12 x 30	51,4°/171,4°/291,4°
- 7H.3.	242	91	100	150	15	25	95	M 12 x 30	4 x M40 x 1,5	54	490	M 12 x 30	51,4°/171,4°/291,4°



Dimensionen • Dimensions

G-Serie • G-Series

Maße für Seitenkanalverdichter 2BH1 943 • Dimensions for side channel blowers 2BH1 943 [mm]



Typ											
Type											
	A	B	C	D	E	F	F'	F''	G	P	P'
2BH1 943 - 7G.2.	560	715	307	490	560	1201	765	600	345	252	130
- 7G.3.	560	715	307	490	560	1201	765	600	345	252	130
- 7G.4.	560	715	307	490	560	1201	845	600	385	252	130

Typ						
Type						
	Q	S	U	V	W	Y x Z
2BH1 943 - 7G.2.	210	40	M 16 x 30	2 x M 40 x 1,5	54	M 12 x 10,5
- 7G.3.	210	40	M 16 x 30	2 x M 40 x 1,5	54	M 12 x 10,5
- 7G.4.	210	40	M 16 x 30	2 x M 40 x 1,5	54	M 12 x 10,5

2BH1 943

(nur Deckelaufstellung möglich)

Maße für Befestigungselemente 2BX2 124 siehe Seite 132

(im Lieferumfang der Pumpe / des Kompressors nicht enthalten).

2BH1 943

(only cover mounting possible)

Dimensions for fixing elements 2BX2 124 see page 132

(not included in the scope of delivery of the pump/compressor)